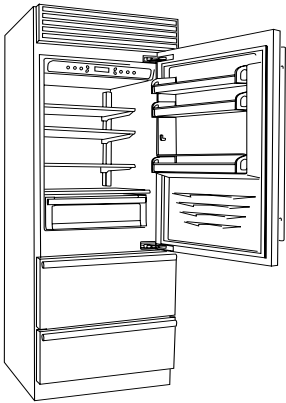




X-Pro Series *Model* XS8990HST



Dimensions	
Width	887 mm
Height	2120 mm
Depth	635 mm
Weight Net	245 kg
Minimum Niche Height	2134 mm
Door Clearance	1470 mm
Door Opening Angle	<105°

Technical Specifications	
Energy Efficiency Class	A+
Energy Usage	442 Kwh
Noise Level	40 dB
Fridge/Riserva Compart. Capacity	372 l
Fresco/Wine Cellar Compart. Capacity	-
TriMode Compart. Capacity	140 l

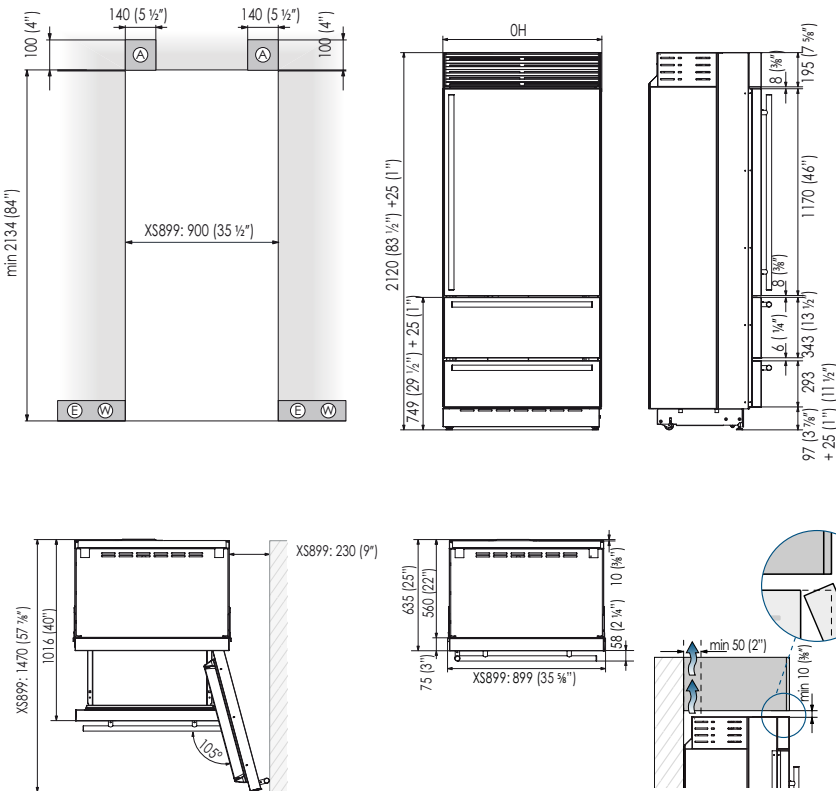
Features	
Fridge Compartment	
Shelves	3
Door Shelves	3
Fresco Compartment	
Shelves	-
Drawers	1 Low Temp
TriMode Compartment	
Large Drawers	2
Inner Drawers	1+ice tray*

Model Options	
Door Opening Left (3) /Right (6)	✓
Ice Maker	✓

Connection data	
Voltage	AC 220-240V 50 Hz
Power supply cable	Schuko 16 A
Length power supply cable	2,0 mt
Water supply tube (female attachment)	3/4"

Specify if right hinge (6) or the left hinge (3)

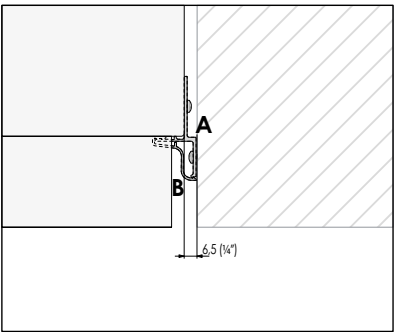
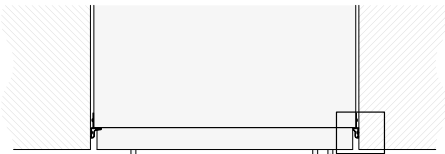
Installation niche features



Accessories

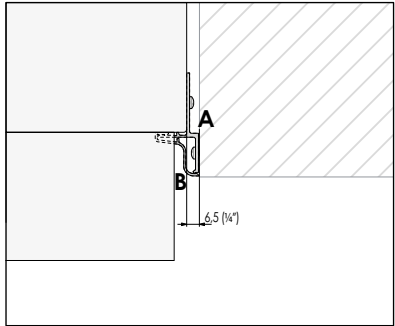
Description	Code
Stainless steel sides	FMX65T
Joining kit - central units with separate front grille (Joining brackets, airflow separation included)	KCCMT
Joining kit - central (models with stainless steel sides) units with separate front grille (Joining brackets, airflow separation included+anti-condensation kit)	KCCMTX
Joining kit - central units with single front grille (Joining brackets, airflow separation included)	KCCIT
Joining kit - central (models with stainless steel sides) units with single front grille (Joining brackets, airflow separation included+anti-condensation kit)	KCCITK
Extra Length Anti-tipping Kit	B04000900
Anticondensation Kit adhesive 1,6 cm thick	KAC16
Cleaning kit microfiber cloth and 1 magic sponges	RP00KP
Water filter	RP00FA
Transformer for network integration with alternative energy (photovoltaic and geothermal energy, home automation, etc.)	KITNRG899749

Flush installation



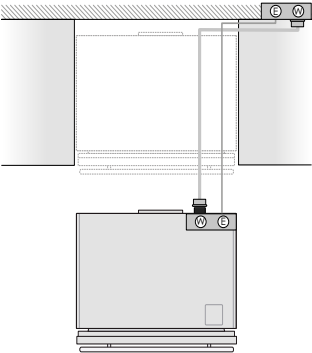
The Lateral Connection Kit (KCLIT/KCLIH/KCLMT/KCLMH) is supplied on all models (except in the unit with stainless steel sides) and consists of a connection element (A) and a aluminium frame (B).

Prominent installation

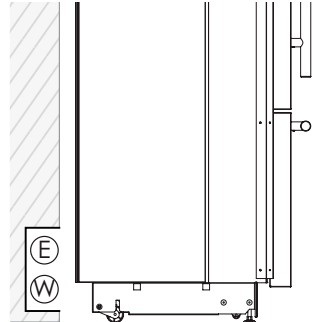


The Lateral Connection Kit (KCLIT/KCLIH/KCLMT/KCLMH) is supplied on all models (except in the unit with stainless steel sides) and consists of a connection element (A) and a aluminium frame (B).

Electrical and Water connection

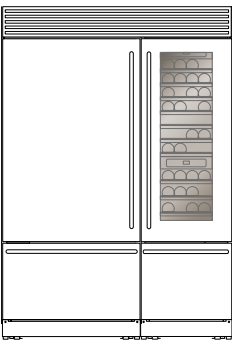


Electrical and Water connection behind the unit



Top grill X-Pro series

In the case of combination of two units of the X-Pro you can request the option of the top grill and the front kick plate.



Description	Model ref.	Code
Kit unique grille + single socket	XS749 + XS749 XS899 + XS599	XPRO150TOP